



**KAMEN D.O.O.
JAJCE**



KATALOG CATALOGUE

Kamen iz naše stijene
Stone from our rock



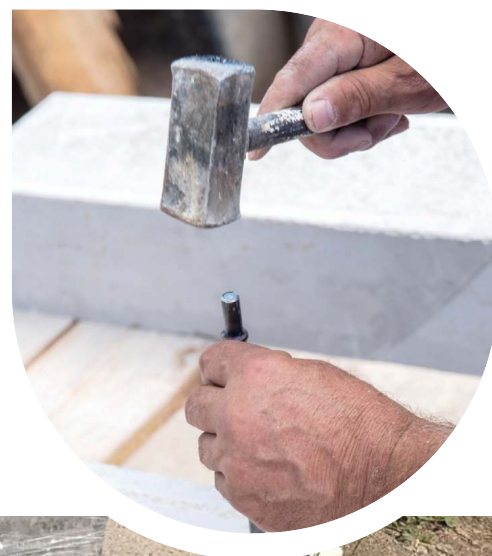


**KAMENOLOMI
"CRVENE STIJENE"
I "POLJANE"**

**QUARRY "RED ROCKS"
AND QUARRY "POLJANE"**

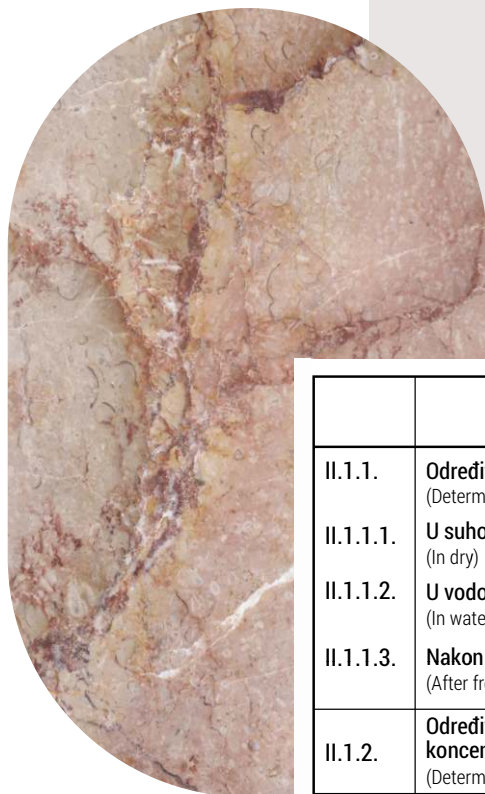


**PROIZVODNJA I POGON
PRODUCTION AND OPERATION**



**FIZIČKO-MEHANIČKE KARAKTERISTIKE KAMENA
SA KAMENOLOMA "CRVENE STIJENE"
PREMA EVROPSKIM NORMAMA**

**PHYSICAL AND MECHANICAL FEATURES
TEST OF "RED ROCKS" QUARRY STONE
ACCORDING TO EUROPEAN NORMS**



**CRVENA
BREČA/ORSO
ROSSO
KAMENOLOM
"CRVENE STIJENE"**



**SIVA BREČA/ORSO
GRIGIO
KAMENOLOM
"CRVENE STIJENE"**

	Vrsta ispitivanja (Type of test)	Ispitano prema (Methods of test)	Rezultati (Results)
II.1.1.	Određivanje jednoosne tlačne čvrstoće (Determination of uniaxial compressive strength)	HRN EN 1926 (EN 1926)	maks.= 117,1 MPa min.= 106,9 MPa a. sred.= 110,4 MPa
II.1.1.1.	U suhom stanju (In dry)		maks.= 114,2 MPa min.= 86,9 MPa
II.1.1.2.	U vodom zasićenom stanju (In water saturated)		a. sred.= 96,1 MPa maks.= 114,0 MPa
II.1.1.3.	Nakon smrzavanja (After freezing)		min.= 85,2 MPa a. sred.= 95,0 MPa
II.1.2.	Određivanje čvrstoće pri savijanju od koncentriranog opterećenja (Determination of flexural strength under concentrated load)	HRN EN 12372 (EN 12372)	max.= 14,0 MPa min.= 12,2 MPa a. sred.= 13,2 MPa
II.1.3.	Određivanje sile loma uz bušotinu za trn (Determination of the breaking load at a dowel hole)	HRN EN 13364 (EN 13364)	max.= 5,3 kN min.= 2,0 kN a. sred.= 3,7 kN
II.1.4.	Određivanje upijanja vode pri atmosferskom tlaku (Determination of water absorption at atmospheric pressure)	HRN EN 13755 (EN 13755)	= 0,08 % (mas.)
II.1.5.	Određivanje prostorne mase (Determination of apparent density)	HRN EN 1936 (EN 1936)	= 2 680 kg/m ³
II.1.6.	Određivanje gustoće (Determination of real density)	HRN EN 1936 (EN 1936)	= 2 720 kg/m ³
II.1.7.	Određivanje otvorene poroznosti (Determination of open porosity)	HRN EN 1936 (EN 1936)	= 0,985
II.1.8.	Određivanje ukupne poroznosti (Determination of and of total porosity)	HRN EN 1936 (EN 1936)	= 1,47 % (vol.)
II.1.9.	Određivanje otpornosti na smrzavanje (Determination of frost resistance)	HRN EN 12371 (EN 12371) (40 ciklusa)	Gubitak mase: = 1,0 % (mas.) Postojan
II.1.10.	Određivanje otpornosti na zamrzavanje i odmrzavanje magnezijevim sulfatom (Determination of resistance to freezing and thawing)	HRN EN 1367-1 (EN 1367-1) (5 ciklusa)	Gubitak mase: = 0,0 % (mas.) Postojan
II.1.11.	Otpornost na habanje (Böhme) (Determination of wear resistance – Böhme)	EN 13892-3	= 23,0 cm ³ /50 cm ²
II.1.12.	Sadržaj sumpora (kao SO3) (Determination of total sulphur content)	HRN EN 1744-1	0,09 % (mas.)
II.1.13.	Ukupni kloridi topivi u vodi izraženi kao Cl-Volhard metoda (Determination of water-soluble chloride salts using the Volhard method)	HRN EN 1744-1	0,00 % (mas.)
II.1.14.	Sadržaj: sulfida nitrata nitrita organskih tvari	HRN EN 1744-1 kvalitativno	nema nema nema nema
II.1.15.	Petrografsko ispitivanje Odredba (Petrographic examination Determination)	HRN EN 12407 (EN 12407)	Vapnenačka breča

Kamen se koristi za vanjska i unutarnja oblaganja i pogodan je za sve vrste strojnih i ručnih obrada.

The stone is used for external and internal coating and is suitable for all types of machine and handwork.

**FIZIČKO-MEHANIČKE KARAKTERISTIKE
KAMENA SA KAMENOLOMA "POLJANE"
PREMA EVROPSKIM NORMAMA**

**PHYSICAL AND MECHANICAL FEATURES
TEST OF "POLJANE" QUARRY STONE
ACCORDING TO EUROPEAN NORMS**

	Vrsta ispitivanja (Type of test)	Ispitano prema (Methods of test)	Rezultati (Results)
II.1.1.	Određivanje jednoosne tlačne čvrstoće (Determination of uniaxial compressive strength)	HRN EN 1926 (EN 1926)	maks. = 158,2 MPa min. = 126,4 MPa a. sred. = 136,1 MPa
II.1.1.1.	U suhom stanju (In dry)		maks. = 150,2 MPa min. = 124,8 MPa
II.1.1.2.	U vodom zasićenom stanju (In water saturated)		a. sred. = 133,1 MPa maks. = 142,5 MPa min. = 95,4 MPa
II.1.1.3.	Nakon smrzavanja (After freezing)		a. sred. = 130,3 MPa
II.1.2.	Određivanje čvrstoće pri savijanju od koncentriranog opterećenja (Determination of flexural strength under concentrated load)	HRN EN 2372 (EN 12372)	max. = 15,4 MPa min. = 12,5 MPa a. sred. = 13,4 MPa
II.1.3.	Određivanje sile loma uz bušotinu za trn (Determination of the breaking load at a dowel hole)	HRN EN 13364 (EN 13364)	max. = 5,8 MPa min. = 2,3 MPa a. sred. = 3,7 MPa
II.1.4.	Određivanje upijanja vode pri atmosferskom tlaku (Determination of water absorption at atmospheric pressure)	HRN EN 3755 (EN 13755)	= 0,27 % (mas.)
II.1.5.	Određivanje prostorne mase (Determination of apparent density)	HRN EN 1936 (EN 1936)	= 2 655 kg/m ³
II.1.6.	Određivanje gustoće (Determination of real density)	HRN EN 1936 (EN 1936)	= 2 685 kg/m ³
II.1.7.	Određivanje otvorene poroznosti (Determination of open porosity)	HRN EN 1936 (EN 1936)	= 0,989
II.1.8.	Određivanje ukupne poroznosti (Determination of and of total porosity)	HRN EN 1936 (EN 1936)	= 1,117 % (vol.)
II.1.9.	Određivanje otpornosti na smrzavanje (Determination of frost resistance)	HRN EN 12371 (EN 12371) (40 ciklusa)	Gubitak mase: = 0,9 % (mas.) Postojan
II.1.10.	Određivanje otpornosti na zamrzavanje i odmrzavanje magnezijevim sulfatom (Determination of resistance to freezing and thawing)	HRN EN 1367-1 (EN 1367-1) (5 ciklusa)	Gubitak mase: = 0,2 % (mas) Postojan
II.1.11.	Otpornost na habanje (Böhme) (Determination of wear resistance – Böhme)	EN 13892-3	= 23,1 cm ³ /50 cm ²
II.1.12.	Sadržaj sumpora (kao SO₃) (Determination of total sulphur content)	HRN EN 1744-1	0,08 % (mas.)
II.1.13.	Ukupni kloridi topivi u vodi izraženi kao Cl-Volhard metoda (Determination of water-soluble chloride salts using the Volhard method)	HRN EN 1744-1	0,00 % (mas.)
II.1.14.	Sadržaj: sulfida nitrata nitrita organskih tvari	HRN EN 1744-1 kvalitativno	nema nema nema nema
II.1.15.	Petrografsko ispitivanje Odredba (Petrographic examination Determination)	HRN EN 12407 (EN 12407)	Vapnenac

POLJANE/SAN GIOVANI

POLJANE FOSIL
/SAN GIOVANI FOSIL

POLJANE STIL
/SAN GIOVANI STIL

Kamen se koristi za vanjska i unutarnja oblaganja i pogodan je za sve vrste strojnih i ručnih obrada.

The stone is used for exterior and interior cladding and is suitable for all types of machining and manual processing.



SIVA BREČA
/ORSO GRIGIO



CRVENA BREČA
/ORSO ROSSO



POLJANE FOSIL
/SAN GIOVANI FOSIL



POLJANE
/SAN GIOVANI



Kamen se odlikuje vrlo dobrim geomehaničkim karakteristikama, malim upijanjem vode te kemijskim sastavom koji je pogodan za vanjsku ugradnju kako u primorskim tako i u kontinentalnim područjima.



The stone is characterized by very good geomechanical characteristics, low water absorption and chemical composition that is suitable for outdoor installation in both coastal and continental areas.



POLJANE STIL
/SAN GIOVANI STIL



SITNI ŠTOK/FINE GRAINED
SIVA BREČA/ORSO GRIGIO



KRUPNI ŠTOK/COARSE GRAINED
SIVA BREČA/ORSO GRIGIO



SITNI ŠTOK/FINE GRAINED
POLJANE/SAN GIOVANI



KRUPNI ŠTOK/COARSE GRAINED
POLJANE/SAN GIOVANI

Obrada štokovanjem ističe prirodnu boju kamena, te je pogodan za oblaganje fasada. Hrapava površina daje mu protuklizna svojstva, te su ploče pogodne za oblaganje vanjskih površina, odnosno trgova, pločnika, stepeništa i ostalih površina.

The finishing treatment emphasizes the natural color of the stone, and is suitable for cladding facades. The rough surface gives it anti-slip properties, and the tiles are suitable for cladding external surfaces, ie squares, sidewalks, stairs and other surfaces.

Granulaciju štokovanih površina, kao i dimenzije ploča izrađujemo po standardu, ili prema želji kupaca.

Granulation of pecked surfaces, as well as the dimensions of the tiles are made according to the standard, or according to the wishes of customers.

PJESKARENO I PALJENO SANDBLASTED AND BURNED



**PJESKARENO/SANDBLASTED
SIVA BREČA /ORSO GRIGIO**



**PJESKARENO/SANDBLASTED
CRVENA BREČA/ORSO ROSSO**



**PJESKARENO/SANDBLASTED
POLJANE/SAN GIOVANI**



**PALJENO/BURNED
SIVA BREČA/ORSO GRIGIO**



Pjeskarene i paljene kamene ploče izrađujemo u standardnim dimenzijama ali i u dimenzijama prema želji kupaca.



We make sandblasted and burnt stone tiles in standard dimensions, but also in the dimensions desired by customers.



**PALJENO/BURNED
POLJANE/SAN GIOVANI**



**BUNJA/BUNJA
SIVA BREČA/ORSO GRIGIO**



**BUNJA/BUNJA
POLJANE/SAN GIOVANI**



**RUSTIK ZIDNE PLOČE/RUSTIC WALL
TILES SIVA BREČA/ORSO GRIGIO**



**RUSTIK ZIDNE PLOČE/RUSTIC WALL
TILES POLJANE/SAN GIOVANI**



**RUSTIK PODNE PLOČE /RUSTIC
FLOOR TILES POLJANE/SAN GIOVANI**



**RUSTIKALNI MOZAIK/RUSTIC
MOSAIC SIVA BREČA/ORSO GRIGIO**



**RUSTIK PODNE PLOČE /RUSTIC FLOOR
TILES POLJANE/SAN GIOVANI**



**RUSTIKALNI MOZAIK/RUSTIC
MOSAIC POLJANE/SAN GIOVANI**



Različitim tehnikama obrade kamenu se daje rustikalni izgled a proizvodi su pogodni za oblaganje podova i zidova u enterijeru i eksterijeru.

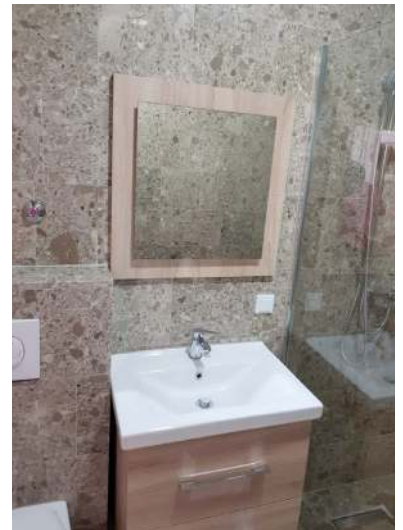


Various stone processing techniques give a rustic look and the products are suitable for cladding floors and walls in the interior and exterior.

BUILT-IN POLISHED

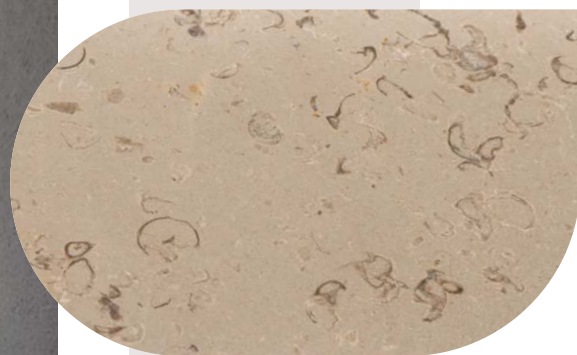


UGRAĐENO POLIRANI





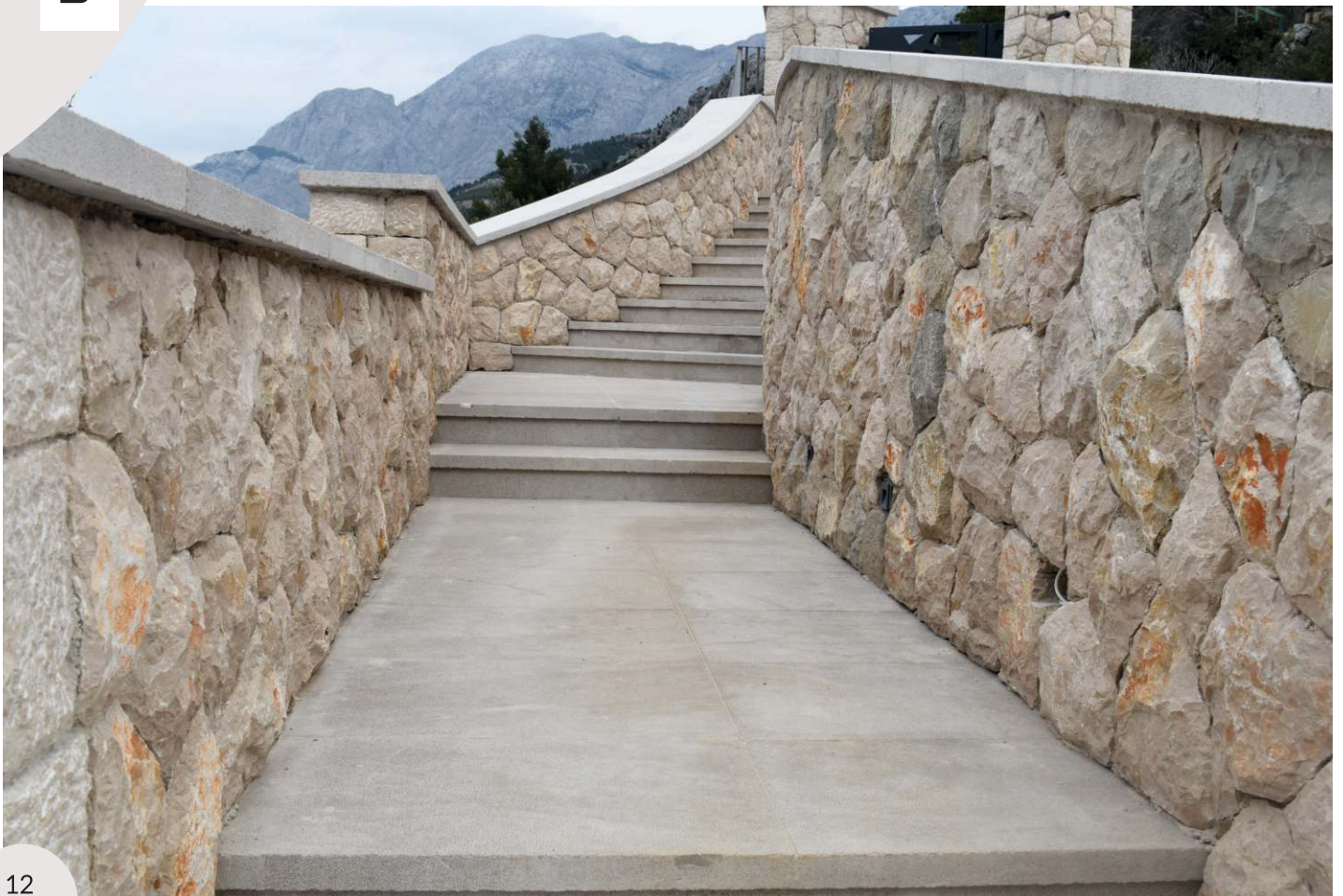
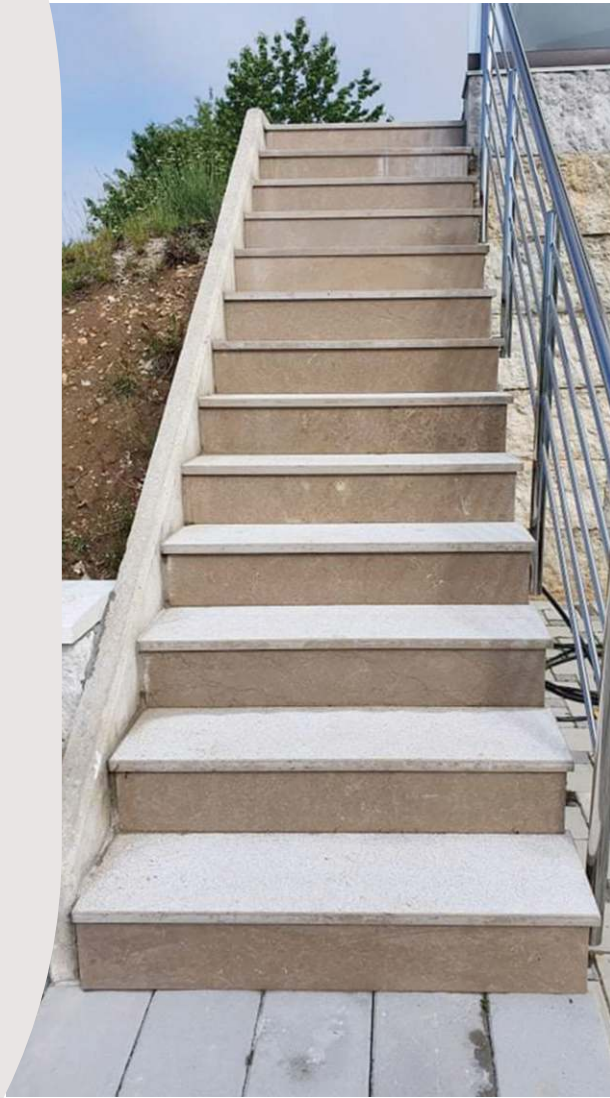
**SIVA BREČA
/ORSO GRIGIO**

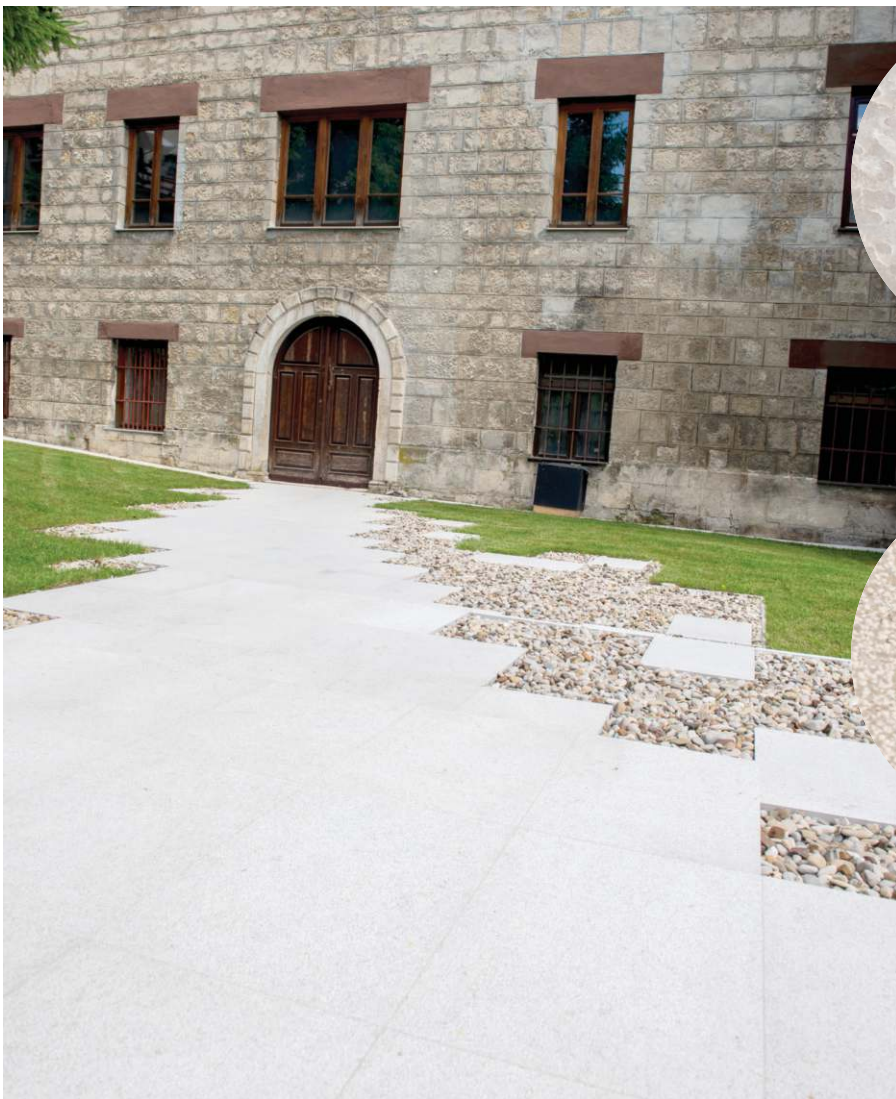


**POLJANE FOSIL
/SAN GIOVANI FOSIL**



UGRAĐENO ŠTOKOVANI I PALJENI BUILT-IN PECKED AND BURNED





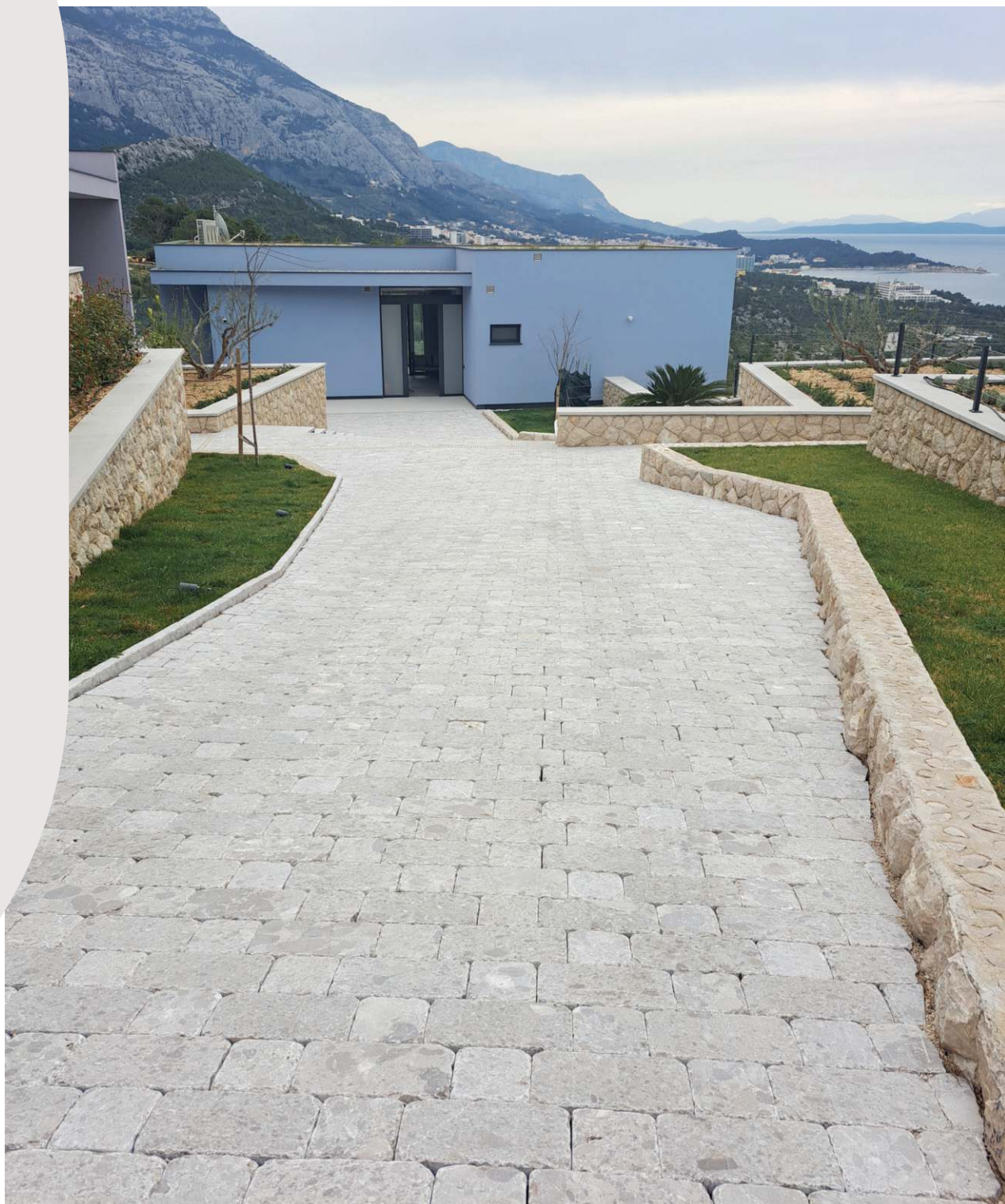
**PALJENO/BURNED
POLJANE/SAN GIOVANI**



**SITNI ŠTOK/FINE GRAINED
POLJANE/SAN GIOVANI**



UGRAĐENO RUSTIK BUILT-IN RUSTIC





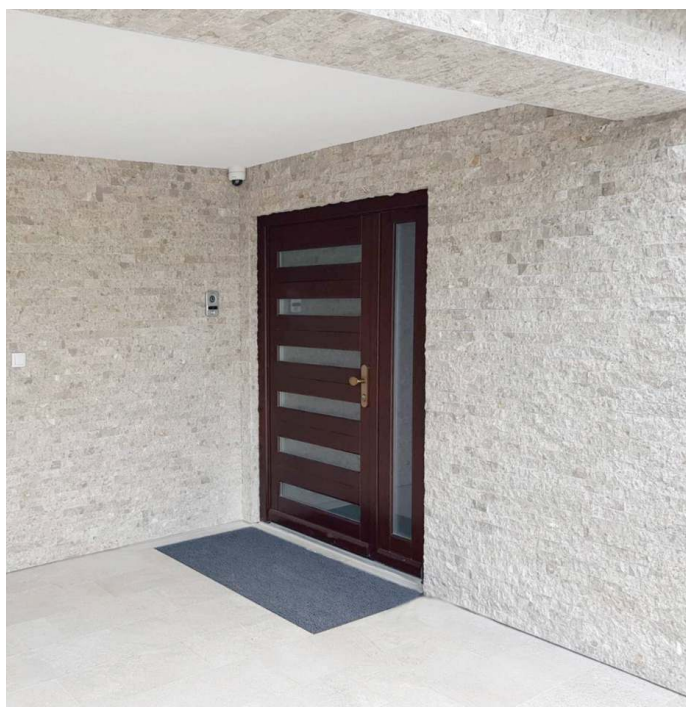
**RUSTIK ZIDNE
PLOČE/RUSTIC
WALL TILES SIVA
BREČA/ORSO GRIGIO**



**RUSTIK PODNE
PLOČE /RUSTIC
FLOOR TILES
POLJANE/SAN GIOVANI**



UGRAĐENO BUNJA BUILT-IN BUNJA





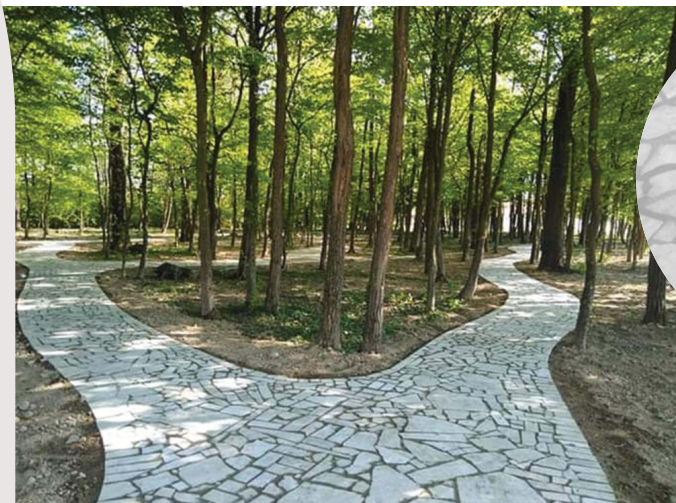
**BUNJA/BUNJA
SIVA BREČA/ORSO GRIGIO**



**BUNJA/BUNJA
POLJANE/SAN GIOVANI**



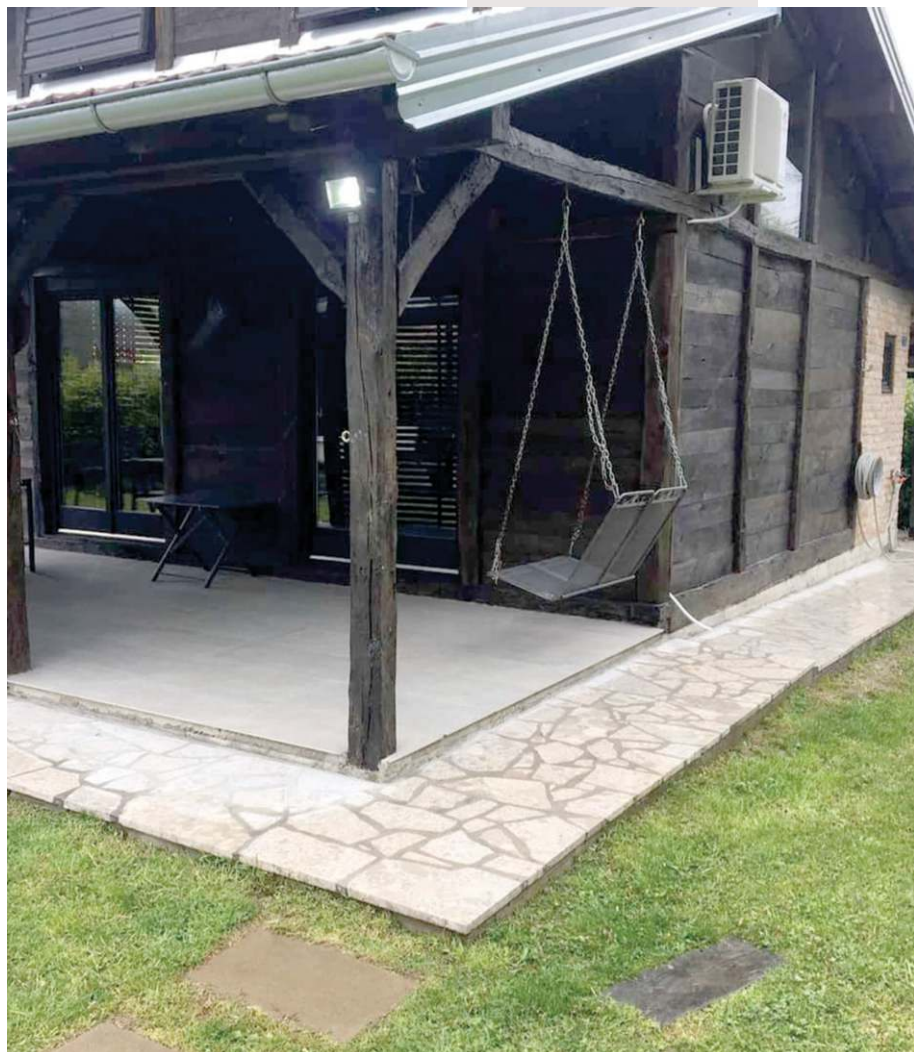
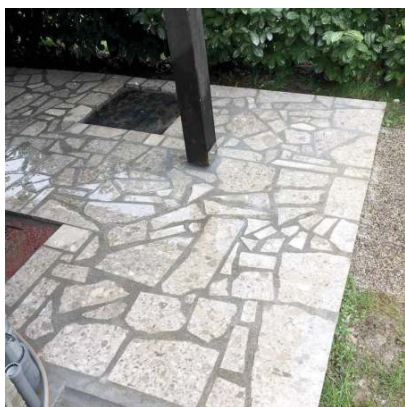
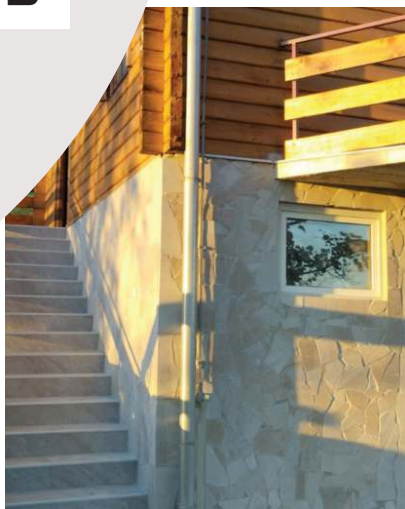
UGRAĐENO MOZAIK BUILT-IN MOSAIC



**RUSTIKALNI
MOZAIK/RUSTIC
MOZAIK SIVA
BREČA/ORSO GRIGIO**



**RUSTIKALNI MOZAIK
/RUSTIC MOSAIC
POLJANE/SAN GIOVANI**







BX Kamen d.o.o.

Divičani bb, 70101 Jajce
Bosna i Hercegovina


+387 63 379 977

+387 63 943 981

+387 30 659 315

dperak@rb-jc.ba

www.bxstone-jajce.com

 **BX**
KAMEN D.O.O.
JAJCE

